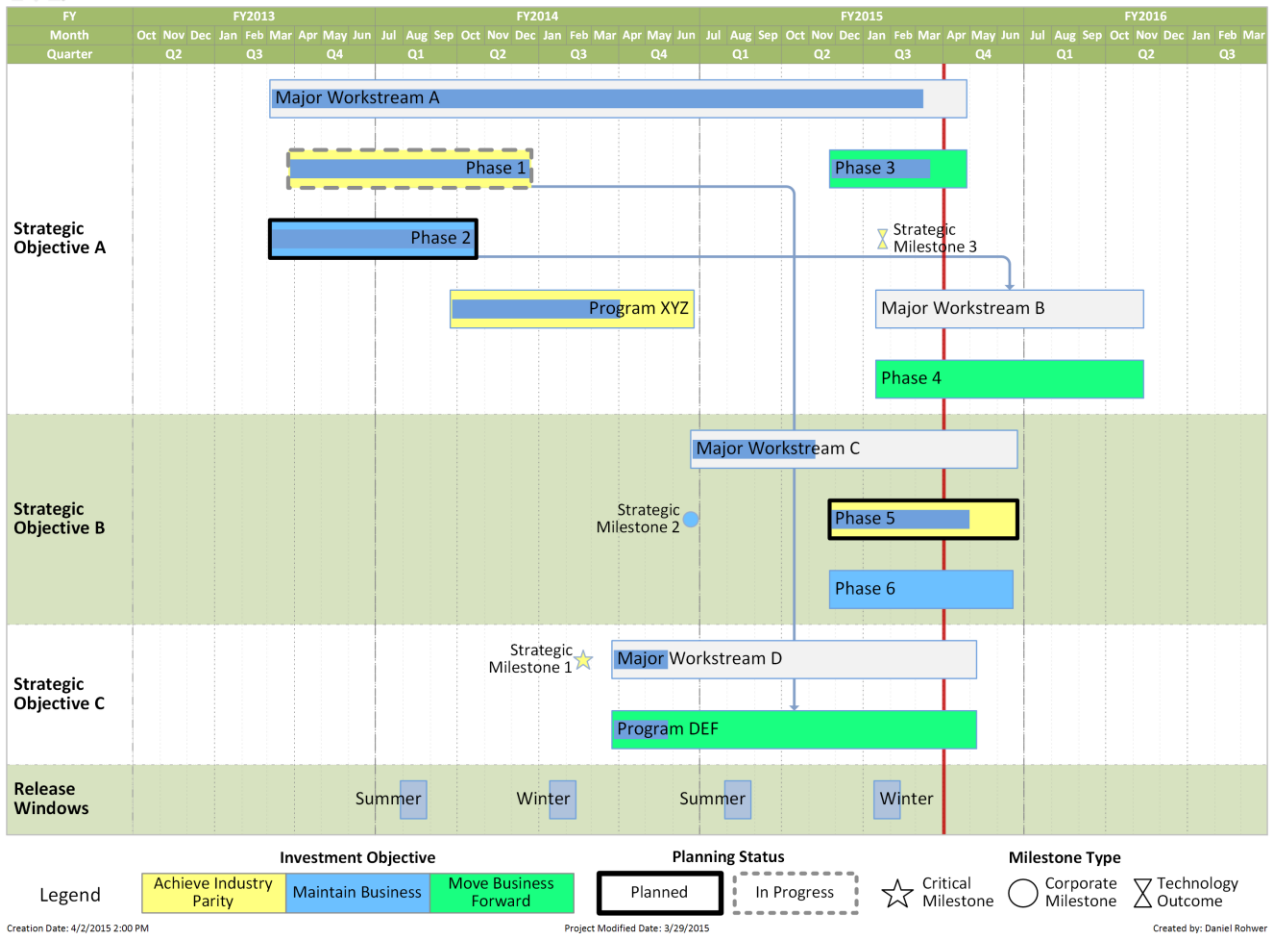


Swimlane Timeline™

What's New in v6.8?

Demo 9 - Strategic Roadmap

View: Demo 9 - Strategic Roadmap (Fiscal Year July 1)



Swimlane Timeline v6.8 - What's New?



- Special Note for Users Upgrading..... 2
- Added Date Marker Custom Date Format..... 3
- Added Timeline Row Cross-Swimlane Date Lines 4
- Added Custom Named Text Settings 5
- Enhanced Send to PPT 6
- Enhanced Preservation of Manual Text Alignment & Format 6
- Enhanced Excel Source Initial Dialogue 6
- Enhanced Shared Folder 7
- Enhanced Built-in Demos..... 7
- Bug Fixes 7

SPECIAL NOTE FOR USERS UPGRADING

Before upgrading to Swimlane Timeline v6.8 we recommend users open any existing Swimlane Timeline Reports saved as VSD files that are regularly refreshed, and ensure that a custom Style has been created based on that regular report.

Due to the many changes this new version is incompatible with refreshing older Swimlane Timeline reports. Users should, however, be able to easily re-create most existing reports by apply a previously saved Style. The new version supports most existing custom styles, custom filters, custom palettes, custom fonts, and custom conditional format Views.

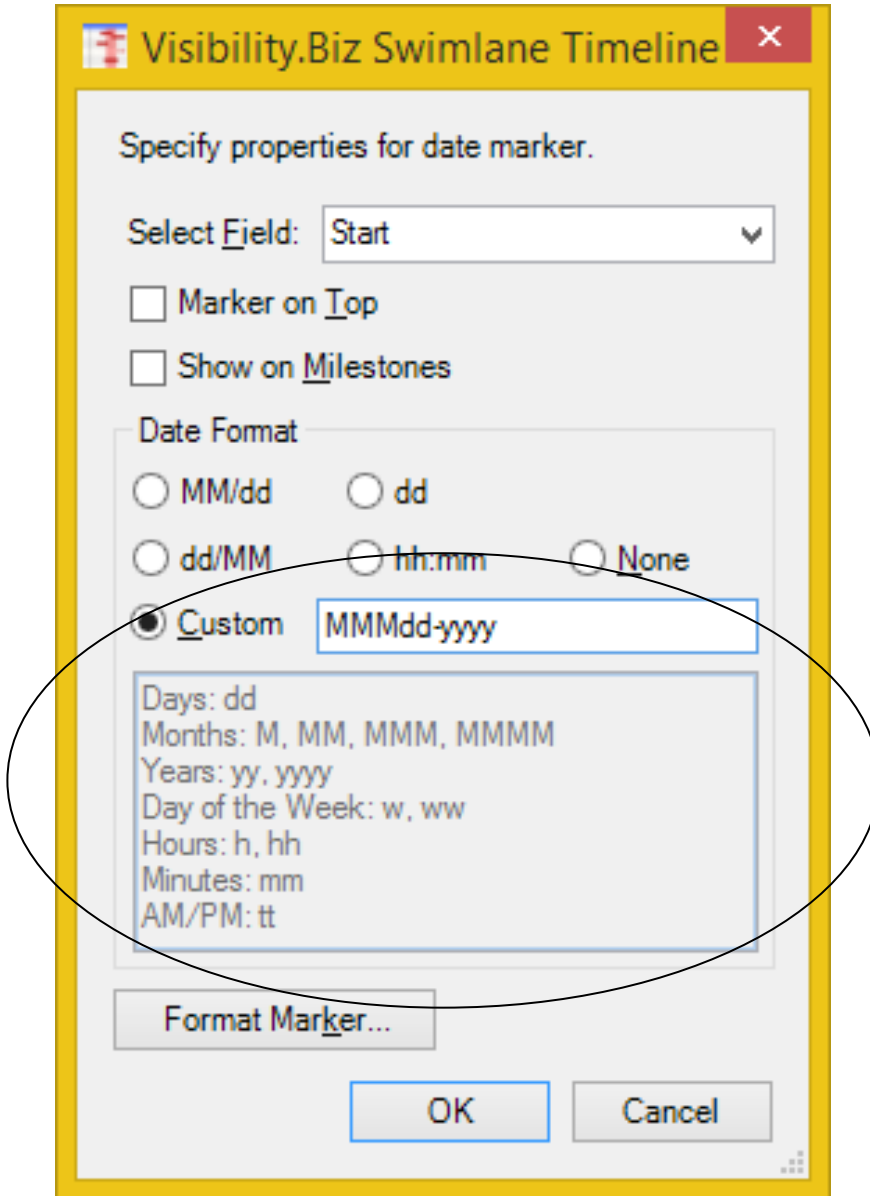


Swimlane Timeline v6.8 - What's New?



ADDED DATE MARKER CUSTOM DATE FORMAT

Allow users to specify a custom date format for date markers as shown below:



The above custom date format will result in the following display:

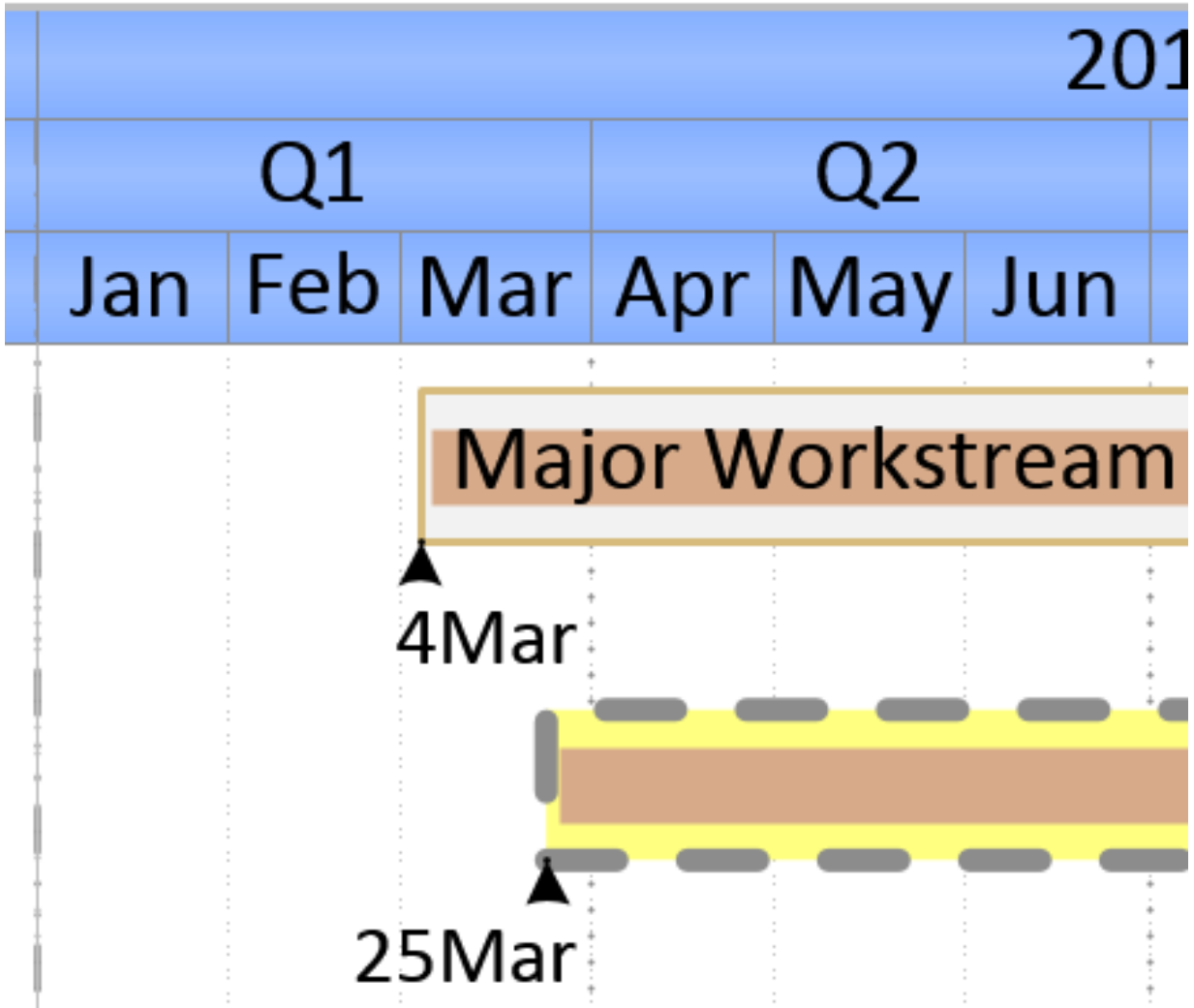


Swimlane Timeline v6.8 - What's New?

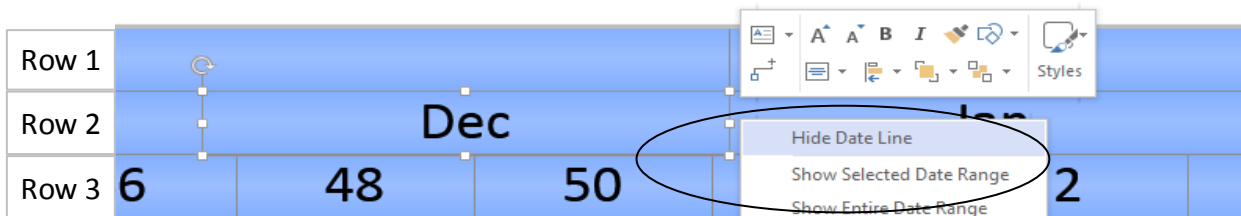


ADDED TIMELINE ROW CROSS-SWIMLANE DATE LINES

Displays custom cross-swimlane column lines for the top 3 timeline rows displayed. In the example below the Year, Month and Quarters timeline rows have different cross-swimlane column line formats:



The Timeline Row time intervals now have a right-click option that allows users to toggle the various cross-swimlane timeline column date lines ON/OFF as shown below:



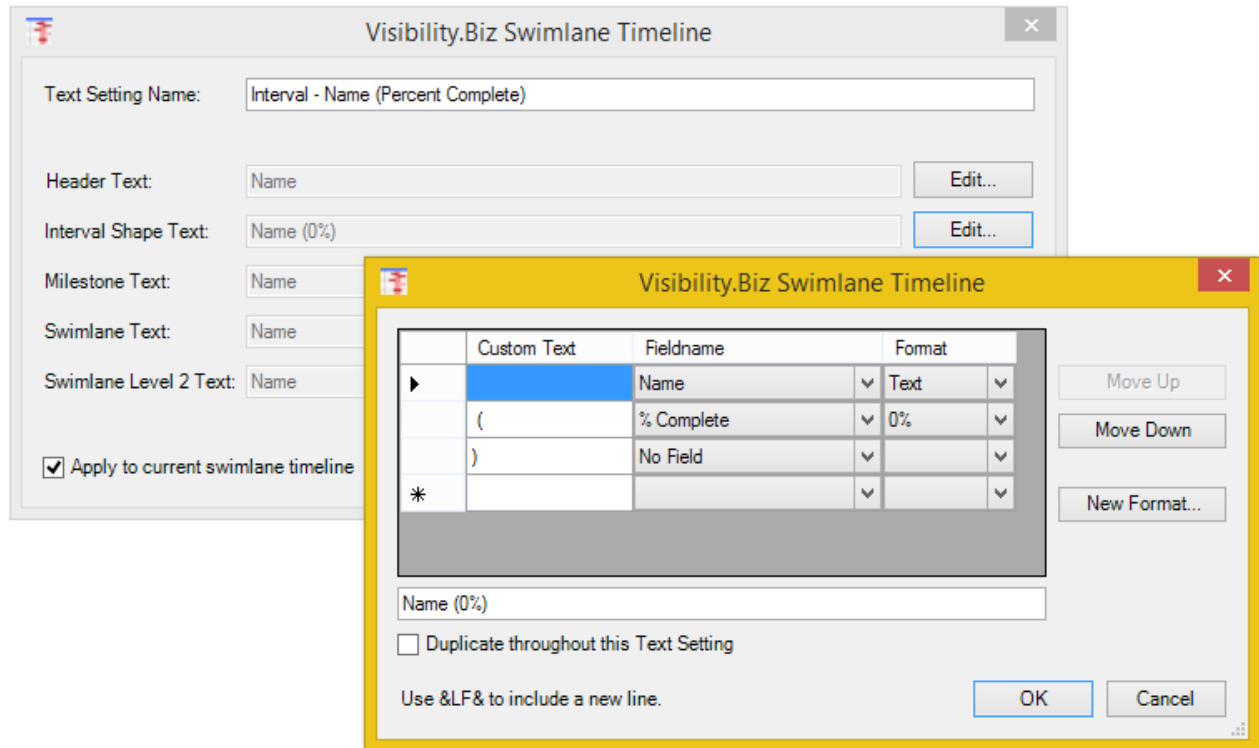
Timeline Rows 1-3 cross-swimlane line formats are customizable using a custom color palette.

Swimlane Timeline v6.8 - What's New?

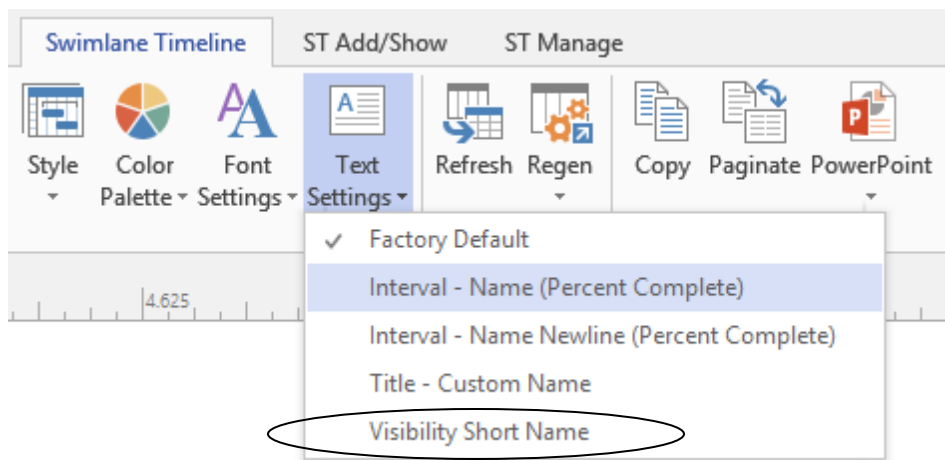


ADDED CUSTOM NAMED TEXT SETTINGS

Allows users to create custom re-usable named display text settings to quickly change the text displayed. Custom Text Settings are created using the "Text Settings" option in the ST Manage menu as shown below:



Once created the predefined text settings are then made available from the new "Text Settings" option in the main Swimlane Timeline menu as shown below:



User's upgrading will find the "VisibilityShortName" field values are now easily applied through the new Text Setting option "Visibility Short Name" pick list item. The older ST Add/Show "Short Name" option has been removed.

Swimlane Timeline v6.8 - What's New?



ENHANCED SEND TO PPT

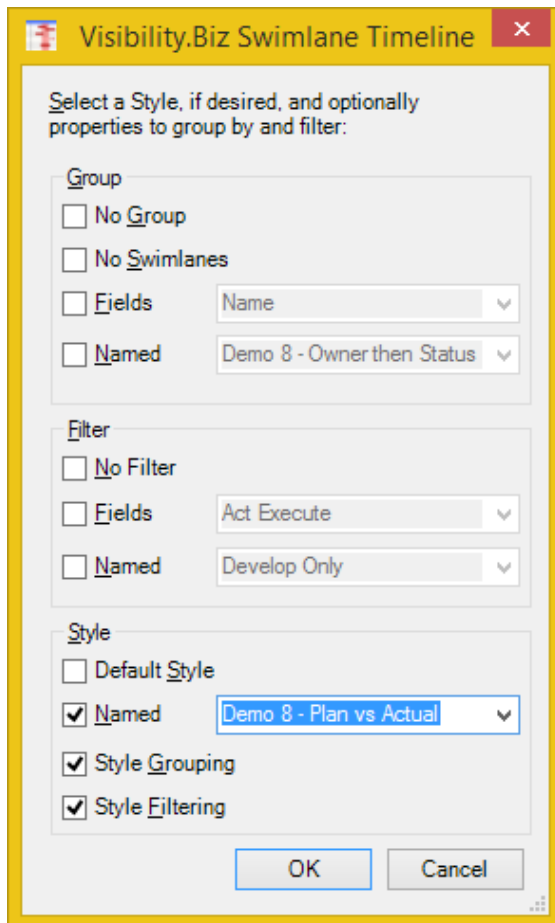
Significant improvement has been made in the Send to PowerPoint and Copy to Clipboard image quality.

ENHANCED PRESERVATION OF MANUAL TEXT ALIGNMENT & FORMAT

Swimlane Timeline Options like Task Sort, Task Height, Swimlane Sort, Refresh and Show Dependencies will now preserve custom text alignment settings.

ENHANCED EXCEL SOURCE INITIAL DIALOGUE

The initial dialogue now supports Named Styles in addition to Group and Sort as shown below:



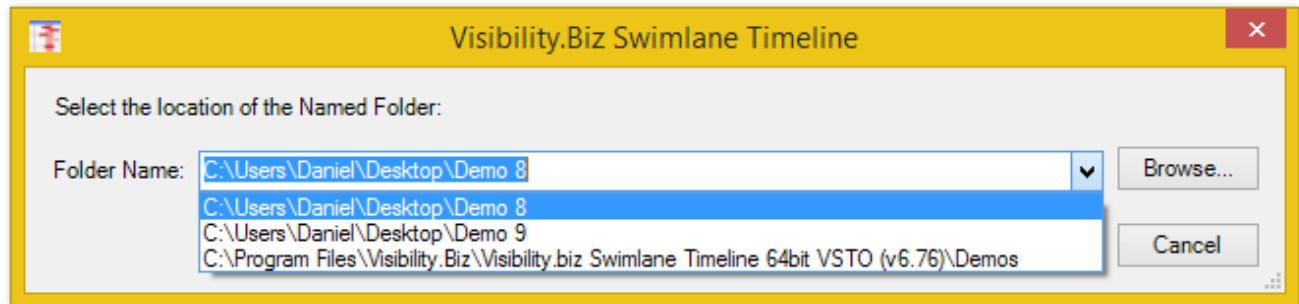
Users can also combine applying a Named Style in combination with Group and Filter selection overrides.

Swimlane Timeline v6.8 - What's New?



ENHANCED SHARED FOLDER

The “Select Folder” dialogue supports a drop-down pick list of previously selected shared folder locations as shown below:



In addition, users can now copy and paste folder locations into the “Select Folder” option.

The shared folder contents is copied locally to boost performance. At runtime, the contents of the Shared Folder is evaluated, and any new files are copied locally. If the Shared Folder cannot be found, then the Swimlane Timeline will use the local copy of the Shared Folder contents. If the Shared Folder is a SharePoint or network folder location, then it must be mapped to a drive letter.

ENHANCED BUILT-IN DEMOS

There are new and updated Demo source files and Swimlane Timeline custom files associated with each demo. The Shared Folder/Select Folder option drop-down pick list includes the location of the demo custom files.

BUG FIXES

- Fix display of manual dependency connectors
- Fix selecting subset of resources when using the Resource View
- Fix the display of a weird font when using the Regen option in Visio 2010-2013
- Fix potential Date Range issue when displaying Fiscal Year Timeline Row
- Fixed swimlane right-click option when applying Expanded Layout for a single swimlane
- Fix Swimlane SORT option when using Descending order and Order in Data selections
- Fix Date Marker Legend to use the same text format for all Date Markers in the legend area
- Fix Paginate option when the Start Date Marker has been deleted from displaying start date arrows in the resulting paginated drawings